

S90 XS/S70 XS V1.06 Updater Release Notes

Index

Caution
Main Revisions and Enhancements
Intended Models
How to Check the Version of the Unit
Update Procedure

Caution

- This updater is only for the S90 XS/S70 XS synthesizer.
- This updater is to be used at the user's own risk.
- The unit may become inoperable if the electrical supply is interrupted while running the updater (by pulling out the AC cord, etc.) or if the USB storage device is removed from the unit. If the unit does not function even when running the updater again, please contact your nearest Yamaha service center.

Yamaha Global Directory

<http://www.global.yamaha.com/directory/global.html>

Main Revisions and Enhancements

V1.03 → V1.06

- In the Master mode, the "Split Sw" setting (a Performance parameter) will now be available for the internal tone generator when playing the keyboard after setting the Mode to "performance" and setting Zone Switch to "on" in the Master Common Edit mode.
- The part switch setting will now be kept even if you press either the [LAYER] button, the [SPLIT] button, or the [DRUM ASSIGN] button after selecting the Performance whose part switch is set to off in the Performance mode.
- Improved the operational stability of the electronic components. This update may solve problems in which the instrument might not start in low-temperature environments.
- Fixed a problem in which the value of the High Threshold parameter of the Effect Type "Multi Band Comp" would not be set properly even if you change the Voice, Performance, Effect Type or Effect Preset.
- Fixed a problem in which the fade-in and fade-out of the Common LFO might not work correctly when either of the "InsA1"- "insA16" or "InsB1"- "insB16" is assigned to Dest of the Common LFO in the Voice Edit mode.
- The value of the Rotor/Horn Balance parameter belonging to the Effect Type "Rotary Speaker" has been corrected from "L63>H"- "L=H"- "L<H63" to "R63>H"- "R=H"- "R<H63."

- Solved a problem in which this instrument would freeze when receiving a note on message whose velocity is same as the “High” setting while setting the Velocity Limit parameter of Voice Element Edit so that the “Low” setting is one value higher than the “High” setting; for example, when “Low” is set to 65 and “High” is set to 64.
- Solved a problem in which the delay tempo would not be synchronized to the Arpeggio tempo when setting the tempo delay parameter and the Arpeggio tempo parameter to the following combinations.
 - Tempo Delay = 4^{th} x 6, Arpeggio Tempo = 15 or less
 - Tempo Delay = 4^{th} x 5, Arpeggio Tempo = 12 or less
 - Tempo Delay = 4^{th} x 4, Arpeggio Tempo = 10 or less
 - Tempo Delay = 2^{nd} , Arpeggio Tempo = 7 or less
 - Tempo Delay = Whole/3, Arpeggio Tempo = 6 or less
 - Tempo Delay = 2^{nd} , Arpeggio Tempo = 5 or less
- Solved a problem in which the connected computer may not recognize this instrument when it is connected to the computer via USB.
- Solved a problem in which the stored Voice, the Part EQ setting, or Effect parameter settings would be changed when storing the edited Voice to an Initialized Voice in Mixing Voice Edit of the Multi mode.
- Solved a problem in which the Sync Quantize Value setting in the Arpeggio Edit mode may not be available when playing multiple Arpeggios along with a MIDI song simultaneously in the Sequence Play mode.
- Solved a problem in which the sound set in a Part would be changed when receiving a Multi change message (Bx 00 3F, Bx 20 44, Cx nn) over a channel other than the basic receive channel in the Multi mode.
- Solved a problem in which the insertion effect switch of Part 8 would not be set to on when setting the insertion effect switch for the A/D Part to on in the Multi mode and then executing the Initialize job while setting the parameters other than “All” to on.
- Solved a problem in which the current Multi would not be recalled to the unedited settings, even when selecting the same Multi number as that of the Multi you had been editing and then clicking [OK] in the MULTI LIBRARY of the S90XS/S70XS Editor.
- Solved a problem in which the “Volume” and “Pan” settings of the Preset display in Zone Edit would not be available for the internal tone generator when changing to a program in which the Mode parameter is set to “voice” or “performance” and in which the Zone Switch parameter is set to “on” in the Master mode.
- Solved a problem in which channel messages received over USB MIDI port 4 or port 5 would be available for the internal tone generator.

- Solved a problem in which changing the parameters of the Utility Voice Master EQ display would affect the internal tone generator when entering the Utility mode from the Performance mode.
- Other minor problems have been corrected.

V1.02 to V1.03

- Solved a problem in which a key off message kept a channel of the tone generator at particular Voices for a few seconds.
- Solved a problem in which the S90 XS/S70 XS would freeze after the following operation.
 1. In the Voice mode, cancelling the "Split" display of the Performance Creator via the [EXIT] or [VOICE] button.
 2. Pressing the [PERFORM] button to move to the Performance mode.
 3. Using the Performance Creator function.
 4. Editing a part parameter of the Performance

Intended Models

S90 XS/S70 XS with firmware versions earlier than 1.06

How to Check the Version of the Unit

1. Press the [UTILITY] button to enter the Utility mode.
2. Press the [UTILITY] and cursor [△] buttons simultaneously.

The following message will appear:



The unit's version is indicated by " Firmware Version *.*.* "

Only the numbers up to the two decimal places after the first dot are important in reading the version number; you can ignore the numbers after the second dot.

Ex.) 1.01.1=1.01, 1.02.4=1.02

Press the [EXIT] button to exit the version information.

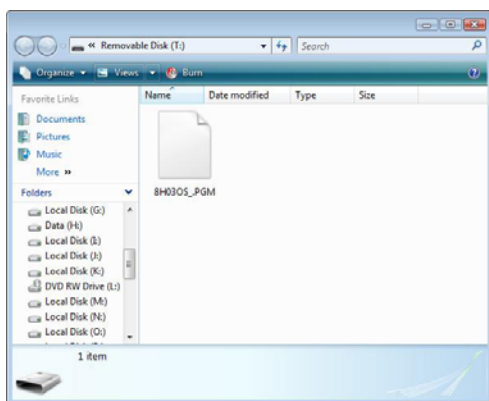
Update Procedure

Required Items

- One USB memory device (capacity of over 256MB) formatted on the S90 XS/S70 XS.

Update Procedure

1. After downloading, copy the uncompressed [8H03OS_.PGM] file to a USB memory device that has been formatted on the S90 XS/S70 XS. No other files should be present on the USB memory device.



2. Power off the S90 XS/S70 XS.
3. Connect the USB memory device copied in step 1 into the S90 XS/S70 XS. Power on the S90 XS/S70 XS while holding down the cursor [Δ] and [UTILITY] buttons until the message "Searching for the firmware updater..." appears on the screen.
4. The S90 XS/S70 XS OS updater will begin with the message "S90/S70 XS Updater ver *.*.*," indicating ".....%".

When the message "Finish. Please turn off " appears, turn off the S90 XS/S70 XS and remove the USB memory device.

NOTICE:

The update process takes about three minutes. DO NOT power off or remove the USB device from the S90 XS/S70 XS during this time. If the electrical supply is accidentally interrupted while running the updater (by pulling out the AC power cord, etc.), the unit may become inoperable. If this happens, run the updater again. If the unit does not function after doing this, please contact your nearest Yamaha service center.

5. Press the [UTILITY] button, then press the [UTILITY] and Cursor [Δ] buttons simultaneously to check the firmware version to confirm that the unit has been successfully updated.

This concludes the update process.